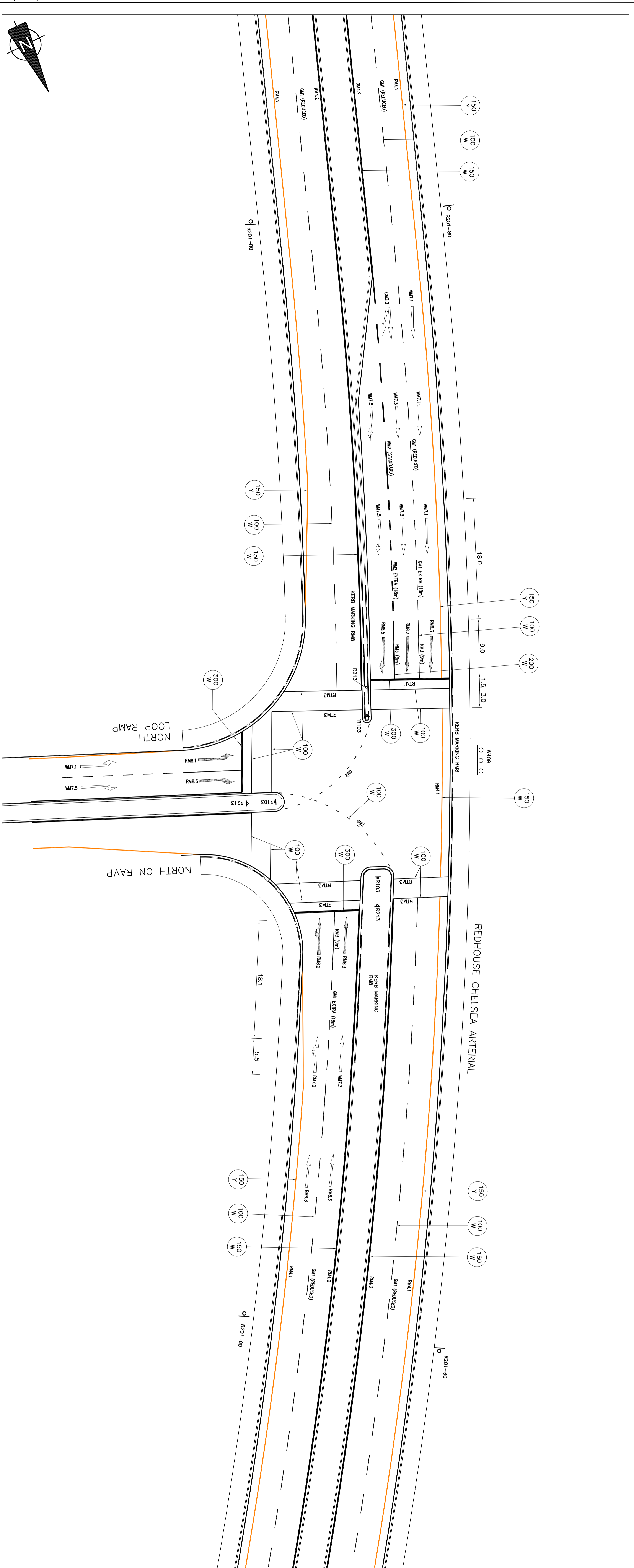
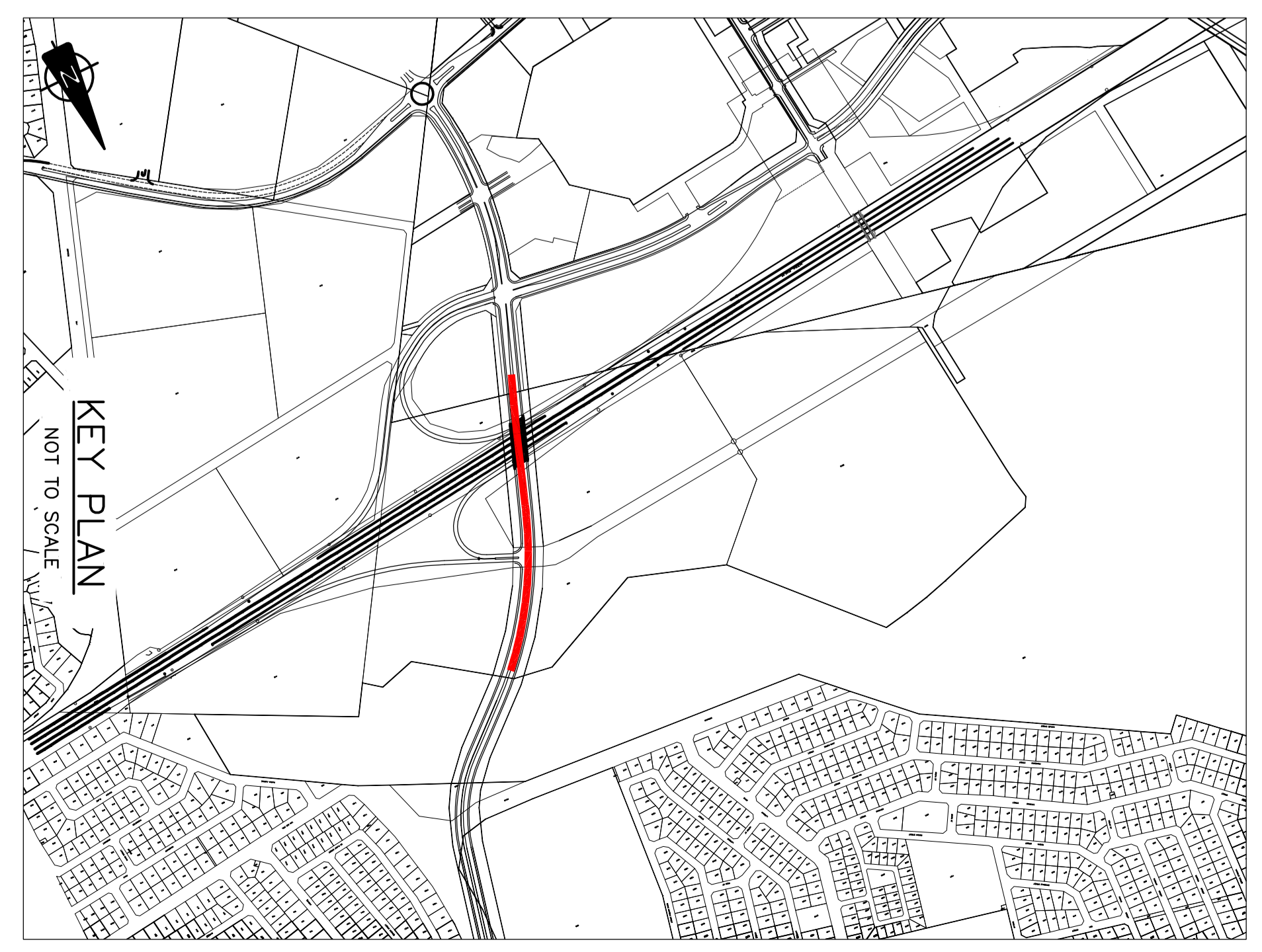


REDHOUSE CHELSEA ARTERIAL: CH640 -CH1200  
SCALE 1:500



REDHOUSE CHELSEA ARTERIAL -CH1400 INTERSECTION  
SCALE 1:250



| REV | DATE | REVISION DESCRIPTION | DRAWN | REV | DATE | REVISION DESCRIPTION | DRAWN |
|-----|------|----------------------|-------|-----|------|----------------------|-------|
| 1   |      |                      |       |     |      |                      |       |
| 2   |      |                      |       |     |      |                      |       |
| 3   |      |                      |       |     |      |                      |       |
| 4   |      |                      |       |     |      |                      |       |
| 5   |      |                      |       |     |      |                      |       |
| 6   |      |                      |       |     |      |                      |       |
| 7   |      |                      |       |     |      |                      |       |
| 8   |      |                      |       |     |      |                      |       |
| 9   |      |                      |       |     |      |                      |       |
| 10  |      |                      |       |     |      |                      |       |

THE MASTER HELD AT THE BRS  
PORT ELIZABETH  
OFFICE BEARS  
THE ORIGINAL SIGNATURE OF  
APPROVAL.

**BKS**  
PORT ELIZABETH OFFICE  
CENTRAL  
6000  
PO BOX 10141 6015 1514  
FAX: +27 (0)41 585 4478  
REG. NO. 1596/0006282/07

**nelson mandela bay**  
MUNICIPALITY  
PORT ELIZABETH URBAN/WATER DESPATCH  
NELSON MANDELA BAY MUNICIPALITY

PROJECT DESCRIPTION  
**REDHOUSE CHELSEA ARTERIAL:  
EXTENSION OF WALKER DRIVE TO CAPE ROAD**

DRAWING TITLE  
**REDHOUSE CHELSEA ARTERIAL:  
ROAD PAINT MARKINGS LAYOUT CH640-CH1200**

| FUNCTION              | NAME           | SIGNATURE                      |
|-----------------------|----------------|--------------------------------|
| DESIGNED BY           | R. ESTERHUIZEN | N/A                            |
| DESIGN CHECKED BY     | M.S. MAYER     | N/A                            |
| DRAWING CHECKED BY    | T.G. ROOSEN    | N/A                            |
| APPROVAL - CONSULTANT | N/A            | N/A                            |
| DATE                  | 2012-06-21     | PROFESSIONAL REG. NO. 20100022 |

| DRAWING STATUS CODES:  | PROJECT    |
|------------------------|------------|
| 00 - 10 - 101 - P - 00 | 2012-06-21 |
|                        | STATUS     |
|                        | REVISION   |

COPYRIGHT RESERVED