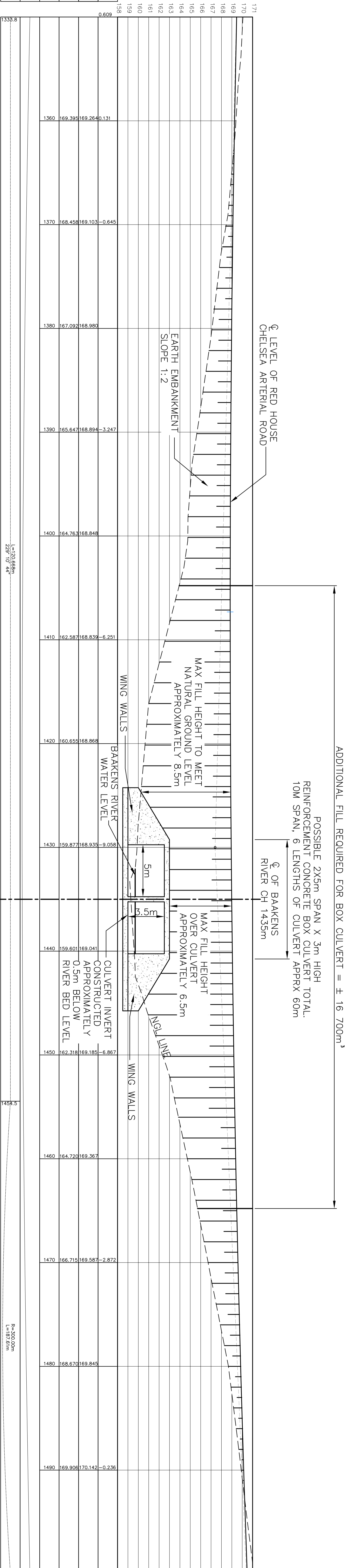
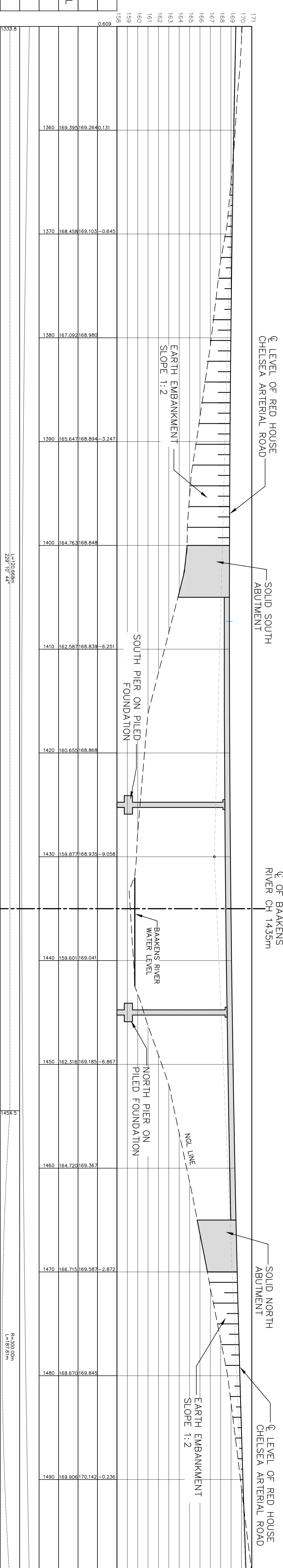


CUT / FILL
ROAD CENTRELINE
C/L GROUND LEVEL
DISTANCE (m)
VERTICAL PROFILE
HORIZONTAL



BAKENS RIVER CROSSING: BOX CULVERT OPTION
SCALE HOR 1:150
VERT 1:150

CUT / FILL
ROAD CENTRELINE
C/L GROUND LEVEL
DISTANCE (m)
VERTICAL PROFILE
HORIZONTAL



BAKENS RIVER CROSSING: BRIDGE OPTION
SCALE HOR 1:150
VERT 1:150

<table border="1"> <tr><th>REV</th><th>DATE</th><th>REVISION DESCRIPTION</th><th>DRAWN</th><th>REV</th><th>DATE</th><th>REVISION DESCRIPTION</th><th>DRAWN</th></tr> <tr><td> </td><td> </td><td> </td><td> </td><td> </td><td> </td><td> </td><td> </td></tr> </table>	REV	DATE	REVISION DESCRIPTION	DRAWN	REV	DATE	REVISION DESCRIPTION	DRAWN									<p>THE MASTER FILED AT THE BRS OFFICE BEARS THE ORIGINAL SIGNATURE OF APPROVAL.</p>	<p>BKS 2 FORT STREET PORT ELIZABETH TEL: +27 (0)41 585 2414 FAX: +27 (0)41 585 2426 R.F. No. 253/2008/2007</p>	<p>nelson mandela bay MUNICIPALITY PORT ELIZABETH UITENHAGE DEBENBACH NELSON MANDELA BAY MUNICIPALITY</p>	<p>PROJECT DESCRIPTION REDHOUSE CHELSEA ARTERIAL: EXTENSION OF WALKER DRIVE TO CAPE ROAD</p>	<p>DRAWING TITLE REDHOUSE CHELSEA PROPOSED BAKENS RIVER CROSSING OPTIONS</p>	<table border="1"> <tr><th>EDUCATION</th><th>NAME</th><th>SIGNATURE</th></tr> <tr><td>DESIGNED BY</td><td>J. TERMANANT</td><td>N/A</td></tr> <tr><td>DRAWN BY</td><td>R. ESTERHUIZEN</td><td>N/A</td></tr> <tr><td>DESIGN CHECKED BY</td><td>K. BURGHAULT</td><td>N/A</td></tr> <tr><td>DRAWING CHECKED BY</td><td>F. ROZE</td><td>N/A</td></tr> <tr><td>DATE</td><td>2012/06/21</td><td>APPROVAL - CONSULTANT</td></tr> <tr><td></td><td></td><td>PROFESSIONAL REG. NO. 5903124</td></tr> </table>	EDUCATION	NAME	SIGNATURE	DESIGNED BY	J. TERMANANT	N/A	DRAWN BY	R. ESTERHUIZEN	N/A	DESIGN CHECKED BY	K. BURGHAULT	N/A	DRAWING CHECKED BY	F. ROZE	N/A	DATE	2012/06/21	APPROVAL - CONSULTANT			PROFESSIONAL REG. NO. 5903124	<table border="1"> <tr><th>DRAWING STATUS CODES:</th><th>REVISION NUMBER</th><th>DATE</th></tr> <tr><td>0000</td><td>00</td><td>2012/06/21</td></tr> </table>	DRAWING STATUS CODES:	REVISION NUMBER	DATE	0000	00	2012/06/21
REV	DATE	REVISION DESCRIPTION	DRAWN	REV	DATE	REVISION DESCRIPTION	DRAWN																																											
EDUCATION	NAME	SIGNATURE																																																
DESIGNED BY	J. TERMANANT	N/A																																																
DRAWN BY	R. ESTERHUIZEN	N/A																																																
DESIGN CHECKED BY	K. BURGHAULT	N/A																																																
DRAWING CHECKED BY	F. ROZE	N/A																																																
DATE	2012/06/21	APPROVAL - CONSULTANT																																																
		PROFESSIONAL REG. NO. 5903124																																																
DRAWING STATUS CODES:	REVISION NUMBER	DATE																																																
0000	00	2012/06/21																																																

FOR APPROVAL