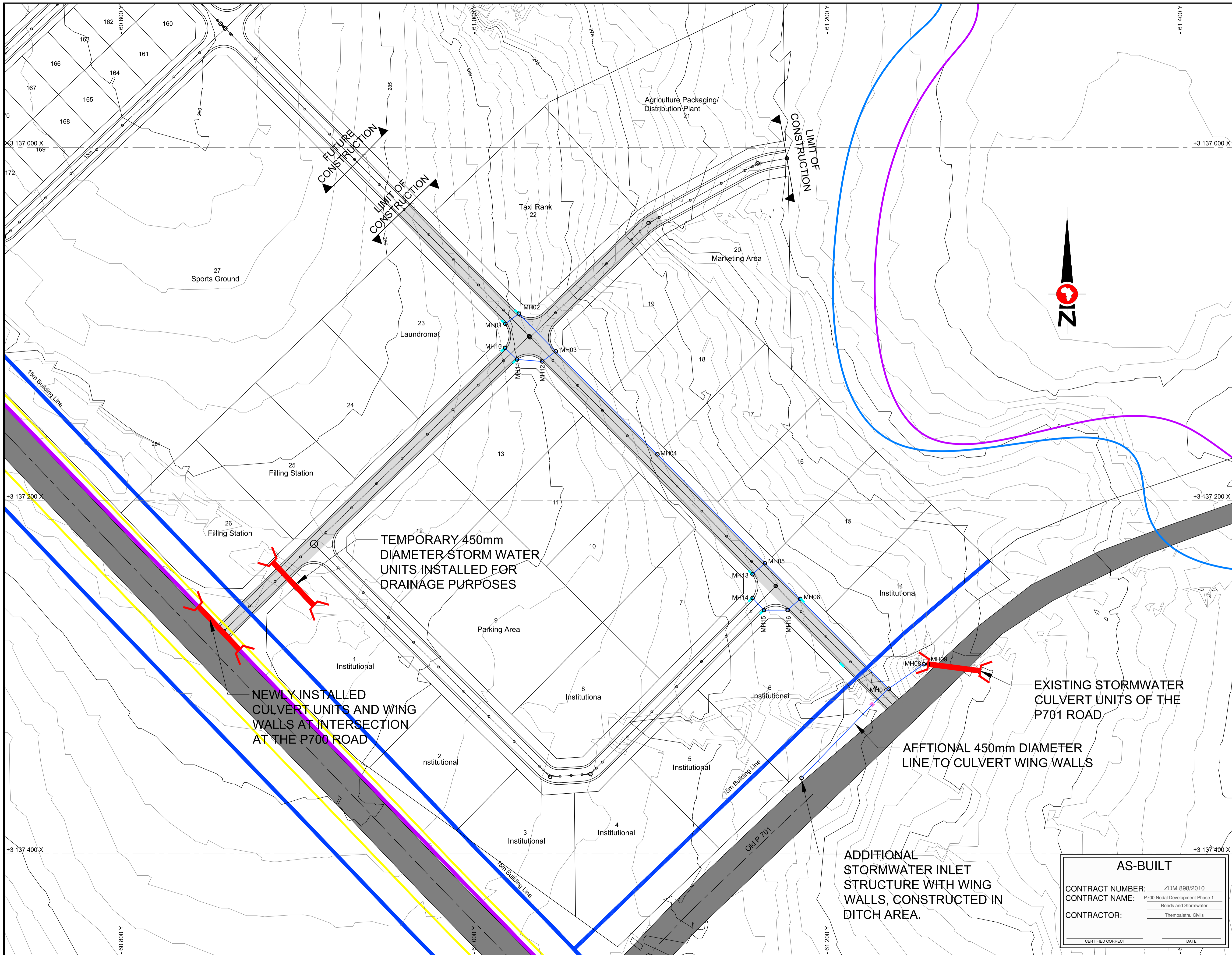


Appendix 10: LAYOUT PLAN



NOTAS/NOTES
 1. REFER TO DRAWINGS 2008/02/02/LS01-LS02 AS-BUILT FOR LONGSECTION DETAILS
 2. REFER TO DRAWINGS 2008/02/02/D01-D05 AS-BUILT FOR TYPICAL DETAILS

LEGENDE/LEGEND

	V-DRAINS
	DRIFT
	PIPE BOX CULVERTS
	FIELD INLETS
	KERB INLETS
	NEW STORM WATER PIPES
	NEW STORM WATER JUNCTIONS
	1:50 YEAR FLOODLINE
	1:100 YEAR FLOODLINE

= ISSUED FOR AS-BUILT PURPOSES =
 FULL COPY RIGHTS RESERVED BY :
AFRI-INFRA GROUP (PTY) LTD
 CONSULTING ENGINEERS AND PROJECT MANAGERS
 PROHIBITED BY COPY RIGHT LAW - NO COPIES, PRINTS OR FAXES MAY BE MADE OF ANY PORTION OF THIS DRAWING FOR ANY PURPOSES WHATSOEVER.

WYSIGINGS/AMENDMENTS

NR./RIDE NO./CODE	DATUM DATE	VOORLETTERS INITIALS	BESKRIVING DESCRIPTION

KLIENT/CLIENT
ZULULAND DISTRICT MUNICIPALITY
 PRIVATE BAG X76 TEL. (034) 874 5500
 ULUNDI FAX. (034) 874 5589


PROJEK/PROJECT
DEVELOPMENT OF P700 STRATEGIC CORRIDOR INFRASTRUCTURE - PHASE 1 -

TEKENING TITEL/DRAWING TITLE
STORM WATER LAYOUT PLAN OF PHASE 1

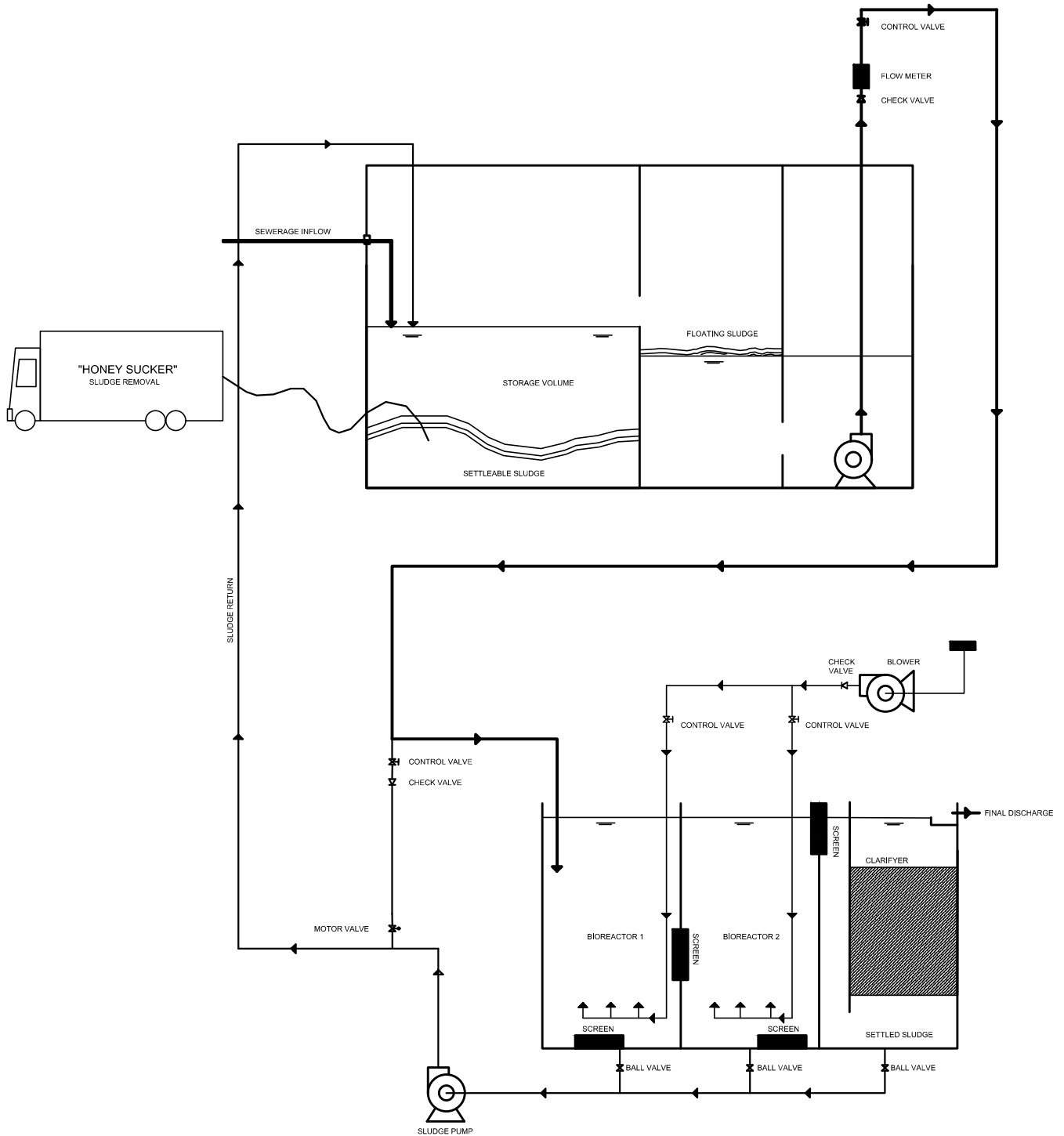
AFRI-INFRA GROUP (Pty) Ltd
 CONSULTING ENGINEERS AND PROJECT MANAGERS
 PO BOX 1368 VRYHEID, 3110 TEL. (034) 981 3464
 181 WES STREET FAX. (034) 981 3484
 VRYHEID e-MAIL: gen@afri-infra.com

ONTWERP DEUR/DESIGNED BY	C.P.	GETEKEN DEUR/DRAWN BY	L.J.B./K.D.B.
ONTWERP NAGESIEN/DESIGN CHECKED	B.C.L.	TEKENING NAGESIEN/DRAWING CHECKED	C.P./G.L.

GOEDGEKEUR DEUR/APPROVED BY

FOR AFRI-INFRA GROUP (PTY)LTD. DATE
KONTRAK NR./CONTRACT NO.
 ZDM 898/2010
LEER NR./FILE NO.
 2008/02/02/SW-L02 AS-BUILT
SKAAL/SCALE
 1:1000
DATUM/DATE
 JULY 2012
TEKENING NR./DRAWING NO.
 2008/02/02/SW-L02 AS-BUILT

AS-BUILT
 CONTRACT NUMBER: ZDM 898/2010
 CONTRACT NAME: P700 Nodal Development Phase 1 Roads and Stormwater
 CONTRACTOR: Thembaletu Civils
 CERTIFIED CORRECT _____ DATE _____



TITLE OF DRAWING	FILE	2008/02/05
TYPICAL PROPOSED SEWER PACKAGE PLANT SCHEMATIC PROCESS LAYOUT	DATE	JULY 2017
	SCALE	N.T.S.
	DRW NO.	2008/02/05 - SEWER